

Historic, archived document

Do not assume content reflects current scientific knowledge, policies, or practices.

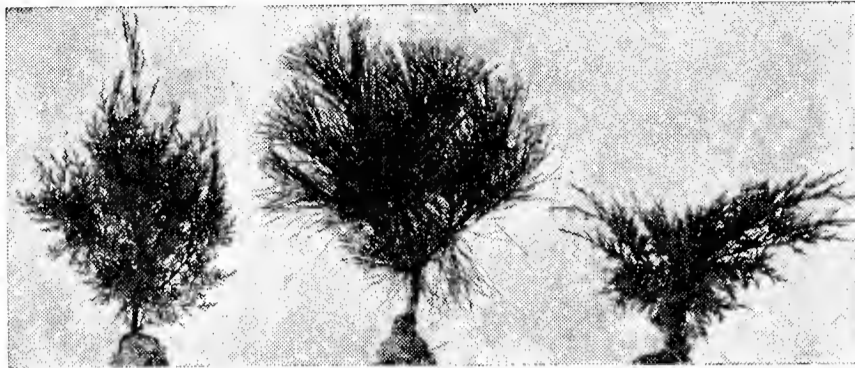
LOW PRICED EVERGREENS

PRICED AT
35c and up



Norway Spruce

NOTE: The 3-year-old prepaid Evergreens on this page will be shipped to you by parcel post. They will be wrapped in waterproof paper and be strong and with a good root system. They should grow very rapidly. The sizes offered on this page are by far the best sized evergreens to plant as they will all grow quickly and develop into fine specimens.



Chinese Arborvitae
10 to 12 in., 35c

Scotch Pine
8 to 10 in., 35c

Juniper Pfitzeri
6 to 8 in., 35c



Hoster's Blue Spruce

BLUE SPRUCE—These fine Colorado Spruces are very blue in color and should make very rapid growth. Price, 3-year-old, 8-12 inches, \$1.00 each, prepaid.

NORWAY (Spruce)—This tree is extensively planted in many of the states. Is one of the best conifers to plant for shelter and windbreaks. 12-18 inches, B&B, 65c; 18-24 inches, B&B, \$1.00; not prepaid.

JUNIPER PFITZERI—Broad Evergreen with horizontal spreading branches. Grows from 4-5 feet high and has plume-like branches. Price, 3-year-old plants, 6-8 inches, 35c each; 3 for \$1.00, prepaid; 18-24 inches, B&B, \$1.00, not prepaid.

JUNIPER SABINA—A low growing, wide spreading, thickly branched, dark green Evergreen. Price, 3-year-old plants, 8-10 inches, 40c each; 2 for 75c, prepaid. 15-18 inches, \$1.00, not prepaid.

VIRGINIA GLAUCA (Blue Juniper) — Not formal. Its irregularity of spread is uniquely attractive, the broadly conical form and beautiful glaucous blue foliage make it one of the choicest of all Junipers. 12-15 inches, 50c.

DEPRESSA PLUMOSA (Juniper) — Low growing evergreen. Grows 2 to 3 feet in spread and 18 inches high. Dark green foliage and very fine. Especially suited to rockeries. 8-12 inches, 40c; prepaid. 12-18 inches, B&B, \$1.50; not prepaid.

RETINOSPORA PLUMOSA — A blue-like Evergreen of a regular habit of growth.

Bright, shiny green foliage. Price, 3-year-old plants, 8-10 inches, 35c; 3 for \$1.00, prepaid.

AUSTRIAN PINE—Large tree with spreading, somewhat pendulous branches, pyramidal when young, with broad and round top, often picturesque head in old age. 15-18 inches, 50c; prepaid.

MUGHO PINE (Dwarf Mountain Pine)—Dark brown branches, bright green leaves, stout, broader than it is high, forming a dark, dome-shaped bush. 8-12 inches, 50c; prepaid. 12-18 inches, \$1.50; not prepaid.

SCOTCH—It also grows to be a large tree and is pyramidal in shape when young. Price, 3-year-old, 8-10 inches, 35c each; 3 for \$1.00, prepaid; 18-24 inches, \$1.00 each, not prepaid.

AMERICAN ARBORVITAE — Very quick grower and can be trimmed to any desired height or shape. Price, 3-year-old, 10-12 in., 35c; prepaid.

CHINESE ARBORVITAE—A pyramidal tree of very compact form. Foliage is bright green and fine for foundation planting. Price, 10-12 in., 35c each, 3 for \$1.00, prepaid.

COLLECTION OF ROCK GARDEN EVERGREENS

White Spruce, 10-12 in.....35c
Juniper Cannarti, 12-15 in.....50c
Biota Aurea Nana, 10-12 in.....35c
Mugho Pine, dwarf 8-12 in.....50c
Taxus, 10-12 in.....50c

One each of the above for \$1.85 or 2 each for \$3.50, prepaid.

NEW AND OLD SPECIAL FAVORITES

Viburnum Carlesii

PINK FLOWERING SNOWBALL—The finest of Snowballs, growing to about 4 feet tall, silver green foliage, very compact and dense. Its beautiful light pink flowers are borne in clusters covering the entire bush. They are very fragrant, with a heliotrope odor. Price, 18-24 inches, 80c; 2 for \$1.50; prepaid.

Crataegus

SCARLET FRUITED THORN—The beautiful scarlet fruits of this tree are very attractive in late fall and early winter. It is a low growing tree, very symmetrical in shape, perfectly hardy. The foliage is always bright and attractive. 2-3 feet, 30c each; 2 for 50c; prepaid.

OAK LEAF HYDRANGEA—Rather uncommon—leaves resemble, in a magnified way, the foliage of some gigantic oak. Flowers similar to *H. paniculata*. Particularly valuable for the brilliant autumn coloring. Good for shrub border. 12-15 inches, 35c; 2 for 60c; prepaid.

CALLICARPA—(Chinese Beauty Berry)—3-4 feet, bushy, small pink flowers in August, valuable for innumerable glittering lavender blue berries in dense clusters. 12-15 inches, 30c; 2 for 50c; prepaid.

Holly Leaved Barberry

MAHONIA AQUIFOLIA—A beautiful evergreen shrub of slow growth to medium height, with smooth shining holly leaves; bright yellow flower clusters in May, and blue berries. Of special value in shady locations. 12-18 inches, 50c; prepaid. 18-24 inches, B&B, 75c; 2 for \$1.25; not prepaid.

Kolkwitzia Amabilis

BEAUTY BUSH—Shrub; growing from 6 to 8 feet tall, the whole plant forming a dome-shaped mass. The flowers are produced along the whole length of the branches in clusters at the ends of short, leafy shoots. Flowers pink. New low price: Heavy 4-year-old plants, 2-3 feet, 35c each; 2 for 60c; prepaid.

SPRING HILL NURSERIES

Established 1885



Tippecanoe City, Ohio

Prices are rising, but prices in this catalog are no higher than during the past three years, and in many instances lower. We urge you to buy now. The fall planting season is here. Your order will be filled promptly. No other investment you can make will pay such big dividends in both pleasure and profit as will dollars invested in trees and plants that grow.

Quality Stock

We have here in central western Ohio, one of the best sections for producing good nursery stock to be found anywhere in the United States. Added to these natural advantages, we use all modern methods in propagating, growing, cultivating, spraying, pruning, digging, and shipping and the result is satisfactory to our customers. Were it not for this we would not be able to make the strong guarantee shown on this page.

Guarantee

We guarantee all our stock to be true to name, good, clean and healthy first-class stock. We also guarantee it to reach you in good growing condition. If at any time found otherwise we will gladly replace the stock or refund the purchase price. It is mutually agreed and understood that we cannot be held responsible for a greater amount than the original purchase price.

General Information

Everything in this catalog that can be conveniently shipped by parcel post is marked POSTPAID. They will be delivered to you PREPAID.

TREES and EVERGREENS and other items in this catalog too large to be sent parcel post are marked by **Express**. They will be sent to you by **EXPRESS or Freight, carrying charge Collect**.

In case of mixed orders, where part of your order is to be prepaid and part not prepaid, the order will be shipped collect, but we will include enough extra plants of the varieties you have ordered to more than pay for our share of the express or freight charges.

Terms

Remittance should accompany the order. It may be made in any way most convenient to you, by check, money order, draft, or currency. If sent C. O. D. partial remittance must be sent with order.

New Fruit You Will want to Plant Now

Peach

GOLDEN JUBILEE—A new large early yellow Peach. It ripens three weeks earlier than Elberta and is of better quality. The skin is yellow blushed with red; flesh yellow, juicy, tender, sweet, freestone. You will want at least a few of these trees in your orchard or fruit garden. 3-4 feet, 50c; 3 for \$1.40; 10 for \$4.00; prepaid.

BIG RED—Fruit is a perfect freestone, oblong, very large. Skin is a fine golden yellow almost completely covered with a splendid rich red making the well-ripened fruit on the tree appear as if it were a solid red all over; flesh rich yellow, juicy and of good quality. 3-4 feet, 50c; 3 for \$1.40; 10 for \$4.00; prepaid.

Plum

IMPERIAL EPINEUSE—A reddish purple prune plum outstanding in rich flavor. Stone semi-free. Finest quality. 3-4 feet, 60c; 3 for \$1.60; 10 for \$4.80; prepaid.

STANLEY—A large, blue prune plum. Comes into bearing earlier than German Prune. Ripens earlier than German Prune. One of the best of the newer varieties. 3-4 feet, 60c; 3 for \$1.60; 10 for \$4.80; prepaid.

Cherry

BRASSINGTON — Ripens between Early Richmond and Montmorency. Highly productive, fruit mild, good size. 3-4 feet, 60c; 3 for \$1.60; 10 for \$4.80; prepaid.

GALLIA BEAUTY—Like Rome Beauty in every particular except color. Solid red in color. Preferred to Rome, especially for north. 1 year old, 3-4 feet, 50c; 3 for \$1.40; 10 for \$4.00; prepaid.

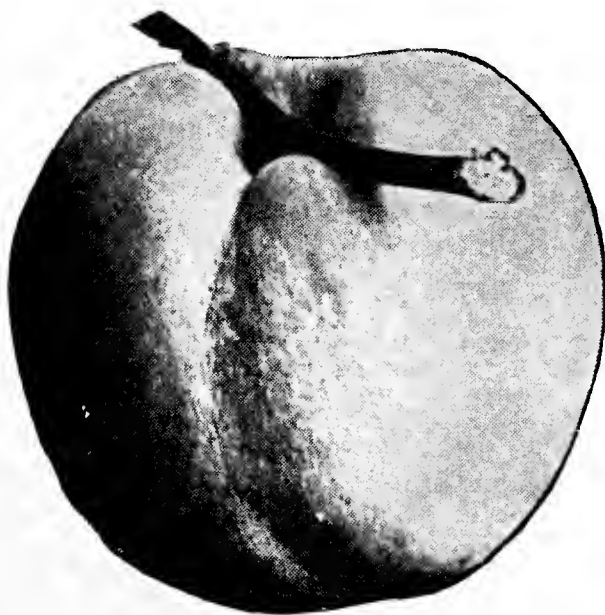
Apple

JOYCE—McIntosh seedling from same origin as Melba. Week or ten days later than Melba. Fruit large and tree vigorous. Very attractive, well adapted to wayside marketing. 1 year old, 3-4 feet, 50c; 3 for \$1.40; 10 for \$4.00; prepaid.

Grape

Hardy California Grafted Grapes now can be grown in this country.

RED MALAGA—The vine is a good producer. Big clusters, large fruit round in shape, deep red color, especially when held to the light. Ripens early. \$1.00 each, 3 for \$2.00; prepaid.



**PLANT
NOW**

All BULBS Prepaid

**SPRING
FLOWERS**

Tulips



Early Single, 3 for 25c; 12 for 75c; 100 for \$5.00.
KAISERSKROON—Popular, showy bright red with wide yellow border.
CRAMOISI BRILLIANT—Brilliant crimson, large. Very good.
RISING SUN—Large pure yellow blossoms.
PINK BEAUTY—Immense flowers of rose and white.
 Mixed, 12 for 60c; 100 for \$4.00.
 Early Double, 3 for 25c; 12 for 75c; 100 for \$5.00.
MR. VAN DER HOEFF—Pure yellow.
MURILLO—White and rose pink, flushed and striped.
BOULE DE NEIGE (Ball of Snow)—Splendid cut flower, pure white.
WM. THIRD—Scarlet, double.
 Mixed, 12 for 60c; 100 for \$4.00.
 Darwins, 3 for 20c; 12 for 60c; 100 for \$4.25.
CLARA BUTT—Salmon pink, old favorite.
ENGLESCOMBE YELLOW—One of best yellow.
FEW BRILLIANT—Brilliant scarlet.
MME. KRELEGE—Bright lilac rose, inside soft rose pink.
PRIDE OF HAARLEM—Enormous flower, brilliant rosy carmine.
LA TULIPE NOIRE—More nearly black than any other tulip.
BARTIGON—Brilliant carmen red.
 Mixed, 12 for 50c; 100 for \$4.00.
LOUIS XIV—Dark purple, one of the best.
 Breeders, 3 for 20c; 12 for 70c; 100 for \$4.75.
YELLOW PERFECTION—Olive yellow.
PANORAMA—Reddish mahogany.
 Mixed, 12 for 60c; 100 for \$4.00.

Narcissus

EMPEROR—An all yellow variety with a large trumpet and overlapping perianth petals. Early. One of the best. 3 for 25c; 12 for 85c; 100 for \$6.00.
KING ALFRED—Both perianth and trumpet are a rich golden yellow. Large and well

shaped. Flaring trumpet with frilled brim. An old favorite. 3 for 35c; 12 for \$1.15; 100 for \$8.00.
LAURENS KOSTER (Poetaz)—Creamy white perianth, lemon yellow cup, free flowering. 3 for 20c; 6 for 35c; 12 for 60c; 100 for \$4.50.

Miscellaneous Bulbs for Garden and Rockeries

Hyacinth

L'INNOCENCE—Best pure white.....20c
QUEEN OF PINKS—Delicate pink.....20c
GRAND MAITRE—Deep porcelain blue....20c
KING OF BLUES—Rich dark blue.....20c
LA CITORIRE—Brilliant scarlet, early.....20c

COLLECTIONS OF HYACINTHS

5 Bulbs— 1 each above.....\$0.75
 10 Bulbs— 2 each above..... 1.40
 25 Bulbs— 5 each above..... 3.25
 50 Bulbs—10 each above..... 6.25

Muscari

MUSCARI (Grape Hyacinths) — Charming spring flowers will grow under trees and shrubs, or in full sun. Attractive in rockery. Blue. 12 for 45c.

Crocus

CROCUS—For every garden. Splendid for naturalizing. White, blue, striped, 12 for 35c; 100 for \$2.50.
 Yellow, 12 for 45c; 100 for \$3.00.
 Mixed, 12 for 35c; 100 for \$2.50.

Hardy Amaryllis

LYCORIS SQUAMIGERA—The only hardy and fragrant amaryllis grown. Immense flowers in the fall of rosy lilac. The bulbs we offer are strong bulbs that throw 5 to 6 gigantic blooms of the most perfect form; easily grown. It is perfectly hardy and blooms second year. Price, 75c each, 2 for \$1.40 prepaid.

Ornithogalum

ORNITHOGALUM (Star of Bethlehem)—Hardy, small white flower. Profuse bloomer. 3 for 25c; 12 for \$1.00; 100 for \$10.00.



Hyacinth

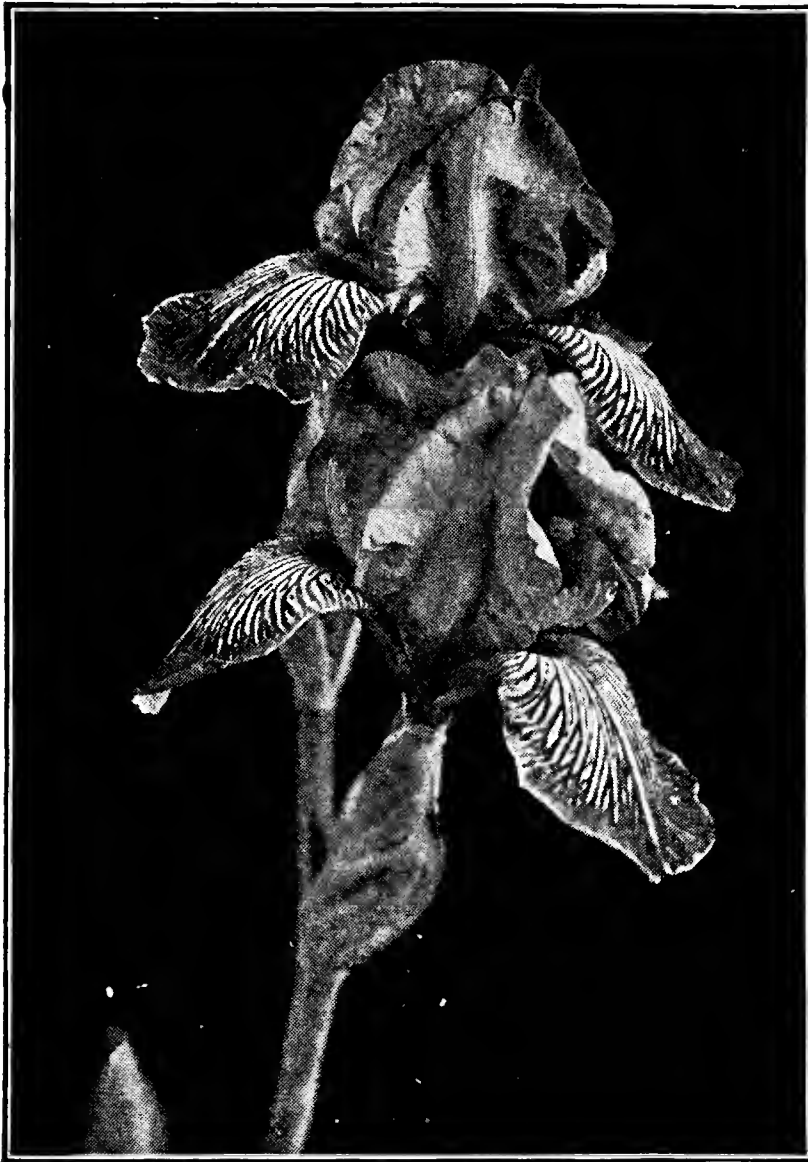
FOR NATURALIZING—SPECIAL
 The greatest and most effective use of Daffodils is to naturalize them. They multiply rapidly. May be used for cutting. Plant this year before the rise in prices. **Best Mixture for Naturalizing, 50 for \$3.00; 100 for \$5.00.**

**For Every Garden Plant Now
for Spring**

IRIS

**Magnificent Balance of Color
in This Collection**

German Iris



Iris Frieda Mohr

AMBASSADEUR (Vilmorin)—S. bronzy violet, F. dark maroon. Medium tall. Late blooming. 10c.

AMBER (Dykes)—An amber yellow self, with red gold beard. Low growing. 10c.

BRUNO (Bliss 1922)—Exceptional size and quality. S. bronze, tinted and lightened with lavender shading to yellow at base. F. deep rich purple of unusual size and quality. Fragrant, wonderful in bright sunshine. 25c.

DUKE OF BEDFORD (Bliss)—Rich deep violet purple, very velvety and brilliant. Beard orange, stalks low and widely branched. 25c.

FRIEDA MOHR (Mohr 1926)—This is unquestionably one of the finest iris introductions and will be for years to come. It is an exquisite pink bi-color, with pale lilac pink standards and deep lilac rose falls. We strongly recommend it to our customers. 75c.

HARRIET PRESBY (Presby)—A very tall light rosy violet. Late. Fragrant. 15c.

LORD OF JUNE—S. palest lavender, F. rich aniline blue. Bi-color. 15c.

MORNING SPLENDOR (Shull 1922)—Deep rich large red violet. Fragrant. 36 in. 15c.

SEMINOLE (Farr)—A brilliant velvety light red purple with a conspicuous orange beard. 30 in. 10c.

SUSAN BLISS (Bliss)—Rosy lilac pink with orange beard. Blooms freely and the color carries well. Late and tall. 10c.

MME. GAUDICHAU—S. violet, F. brilliant blackish purple. Dark velvety bi-color of fine shape, finish and exceptional substance. Fragrant. 36 in. 10c.

SNOW WHITE—A pure white of exceptionally fine form. One of the very best for mass effect. 50c.

All prepaid

LILIES TO PLANT THIS FALL

LILIUM CANDIDUM (Madonna Lily)—This well known and much sought for Lily is considered one of the choicest and one of the easiest to grow. Trumpet-shaped blooms are pure white and borne in spikes on tall, rigid, leafy stems. Bulbs should be planted as early as possible in the autumn. 25c each, 12 for \$2.00. Prepaid.

GIANT TIGER LILY—A grand Lily with large pyramids of orange-red flowers spotted with purplish black. August and September. 4 to 5 feet. One of the hardiest and most easily grown. 25c each, 3 for 70c; 12 for \$2.00. Prepaid.

REGALS LILY—One of the most beautiful of all known lilies. It is very hardy and will bloom out doors in June or early July. Mature bulbs produce from 5 to 15 flowers on a single stem which retain their freshness over quite a long period. Price, 3-year-old bulbs, 20c each; 3 for 50c; 12 for \$1.50; 100 for \$10.00. Prepaid.

Extra PEONIES Choice

Add a Few of the Newer Peonies while Prices Are Down.
Fall is the Ideal Time to Plant.

BARONESS SCHROEDER—Late. White with shadings of flesh. This is one of the finest Peonies. Its immense flowers of great substance with high chalice-shaped center are freely produced, lasting a long time. Very fragrant. 50c

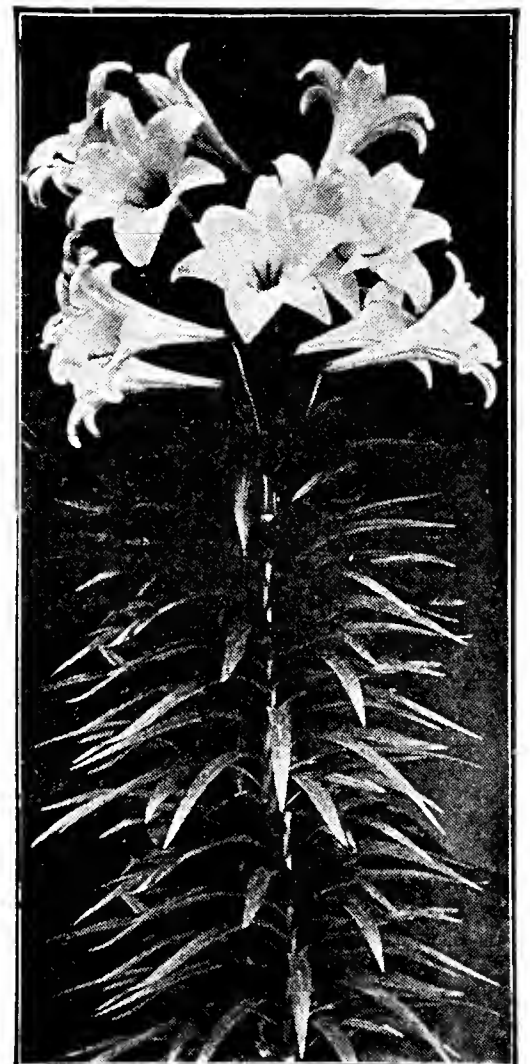
LE CYGNE—Very large, perfectly formed flower, freely produced; cream-white with a touch of green at the heart. The finest white. \$1.00.

FELIX CROUSSE—Very brilliant red. Medium to large, globular, typical bomb shape, fragrant; strong growth. mid-season. 35c.

THERESE—A most desirable variety of a charming shade of violet-rose, changing to lilac-white. Develops a high crown; strong grower and very free bloomer. A splendid addition to the midseason sorts of which it is one of the best. 75c.

KARL ROSENFELD—Very large flower; globular, semi-rose type. Extremely vigorous grower, tall, and free-flowering. As an early red it has no equal. 35c.

All prepaid



Madonna Lily

**Plant
Now
Before
Prices Rise**

FRUIT TREES

**Gain
a Year—
Fall is Time
to Plant**

No home or farm, large or small can afford to neglect planting fruit trees each year. They are profitable, beautiful, healthful, and will pay big dividends. More money can be made on land with apples, selling at 50c per bushel than off of wheat selling at \$1.50 per bushel.

Apples—King of Fruit

YELLOW TRANSPARENT—Summer—clear white, turning pale yellow.

JONATHAN—Early Winter—Red, smooth, fine quality. Good keeper.

GRIMES GOLDEN—Early Winter—Bright yellow, pink cheek, highest quality.

DELICIOUS—Early Winter—Large, brilliant dark red, splendid shipper.

STAYMAN'S WINESAP—Early—Very productive, skin greenish purple, flesh yellow, firm, juicy.

ROME BEAUTY—Early Winter—Good keeper, mottled and striped in shades of red.

GALLIA BEAUTY—Best of Red Rome Beauty sports, bright red, better quality.

WINESAP—Large Winter—Dark red, juicy, good commercial.

TRANSCENDENT CRAB—Brownish yellow with blush of carmine, crisp, firm.

Height	Each	3 trees	10 trees	100 trees
3-4 ft.	\$0.35	\$1.10	\$3.00	\$27.00
4-5 ft.	0.50	1.40	4.00	35.00
2-3 ft. bundle of 5 trees \$1.10. All prepaid.				

Peach

GOLDEN JUBILEE PEACH—New, early freestone, highly colored. Good shipper. See page 3 for price.

BIG RED—New, freestone, very good. See page 3 for price.

ELBERTA—High colored yellow freestone. One of the best. Most planted.

J. H. HALE—Larger and earlier than Elberta. Splendid commercial peach.

SOUTH HAVEN—Early yellow freestone. Very good.

Height	Each	3 trees	10 trees	100 trees
3-4 ft.	\$0.25	\$.70	\$1.95	\$17.00
4-5 ft.	0.35	1.00	2.95	23.00
2-3 ft. bundle of 5 trees \$1.00. 100 trees \$10.00. All prepaid.				

Plum

ABUNDANCE—One of best Japanese plums, bears young, rich bright red with light yellow flesh, excellent quality.

GERMAN PRUNE—Purple, medium size, splendid for preserving.

GREEN GAGE—Yellowish green, stone nearly free, high quality for canning.

IMPERIAL EPINEAUSE—Reddish purple, rich flavor. New. See page 3 for price.

STANLEY—New, blue prune plum. One of the best of newer varieties. See page 3 for price.

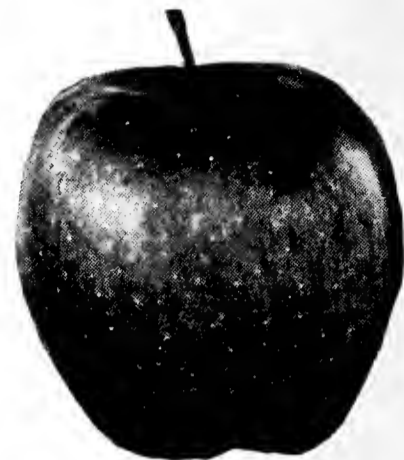
Height	Each	3 trees	10 trees
3-4 ft.	\$0.45	\$1.20	\$3.60
4-5 ft.	0.55	1.50	4.50
2-3 ft. bundle of 5 trees \$1.60. All prepaid.			

NUT TREES

FILBERTS (American)—The common Hazelnut. Will grow in almost any location. Price, 30c each; 2 for 55c; prepaid.

WHITE WALNUT OR BUTTERNUT—This tree is chiefly esteemed for its abundant crops of fruit, which abounds in oil, and is sweet and rich. The form of the nut is oblong, oval, and narrowed to a point at the extremity. The tree is considered valuable as a park tree. Price, 2-3 ft., 35c; 3 for \$1.00; prepaid.

If you are going to plant an orchard write us for free advice on varieties and prices.



Cherry

EARLY RICHMOND—Old favorite, very hardy, sour, good for cooking.

MONTMORENCY—Larger than Early Richmond, later, best for shipping.

BRASSINGTON—Earlier than Montmorency, very productive, mild, good size. See page 3 for price.

GOV. WOOD—Sweet, pinkish yellow, flesh soft, early, regular crops.

YELLOW SPANISH—Sweet, yellow, flesh firm, best and most popular sweet.

Height	Each	3 trees	10 trees
3-4 ft.	\$0.35	\$1.00	\$2.75
4-5 ft.	0.45	1.30	3.50
2-3 ft. bundle of 5 trees \$1.00. All prepaid.			

Pear

BARTLETT—Large, early, yellow, with blush next to sun, juicy, very popular.

CLAPPS' FAVORITE—Large, fine, pale yellow with brown dots, fine texture.

ANJOU—Large, very productive, late.

Prices same as Plum.

Hardy Apricot

A real hardy apricot. Imported from Hungary a few years ago. Comes into bearing very young and seldom misses a crop. Quality of fruit is excellent and good sized. Beautiful in bloom and when tree is in fruit. Now offered for the first time. Prices, 3-4 ft., 60c; 2 for \$1.00; prepaid.

See page 7 for additional Small Fruits

Asparagus Plants

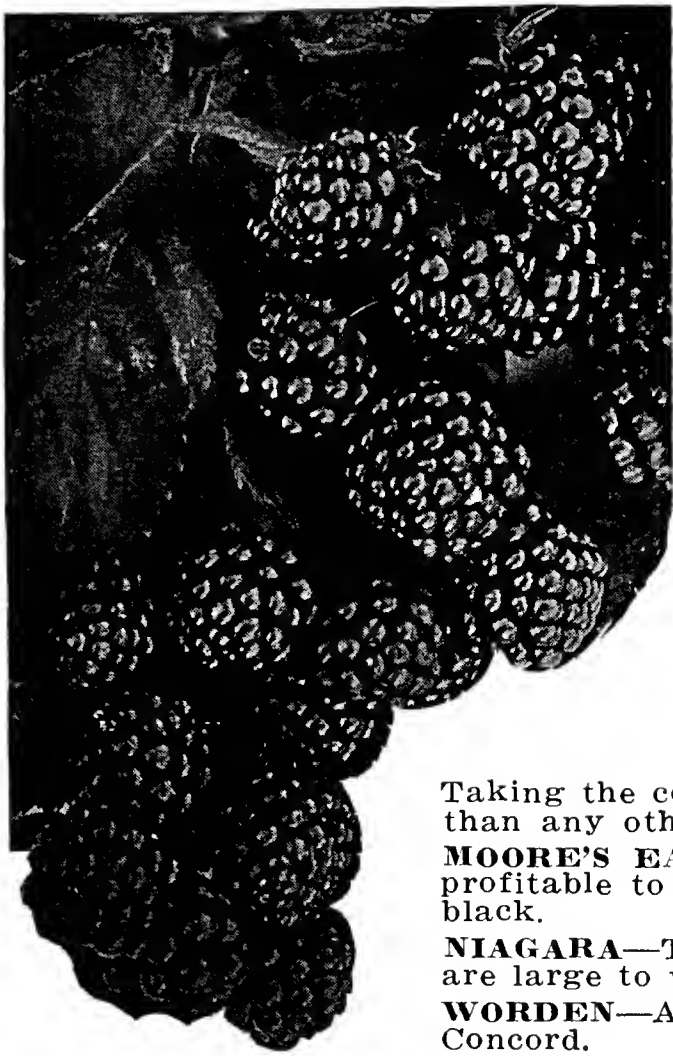
WASHINGTON—A new rust resistant pedigree Asparagus. As a standard variety for the production of fancy Asparagus for home or market, it stands ahead of all others in size, vigor, tenderness and quality.

AT LOW PRICES

Price, 25 for \$1.00; 100 for \$2.00; 1,000 for \$10.00; prepaid.

Rhubarb

MYATT'S LINNAEUS—Leaf stalks long, large, tender, juicy, early. Cellar-grown rhubarb with beautiful ink, tender stalks may be enjoyed in March by anyone who will devote a little time to it. Price, 10 for 85c; 100 for \$7.50; prepaid.



SMALL FRUITS

Grapes

PLANT GRAPES FOR PROFIT
FALL IS IDEAL TIME

OUR LOW PREPAID PRICES
ON 2 YEAR GRAPE VINES

	Each	5	10	25	100
2 Year Old Varieties..	\$0.20	\$0.90	\$1.75	\$4.00	\$14.50

Write for Special Prices on 1,000 lots

AGAWAM—Deep red or maroon.

BRIGHTON—Highest quality, berries are wine red, ripens in mid-season.

NEW GRAPE CACO—The vines are strong and vigorous. The fruit is very large; in color a rich wine red over amber. Early bearing, usually showing several good-sized bunches the second year. Its flavor is luscious, sweet, delightful, distinctive. **Price, 40c each; 3 for \$1.00.**

CATAWBA—Best red variety. It is last to ripen.

CONCORD—From sheer merit the Concord has become the most popular grape in the United States.

Taking the country as a whole, more Concords are now in bearing than any other variety.

MOORE'S EARLY—Most reliable, very early variety, immensely profitable to commercial growers. Medium bunch, berry large, jet black.

NIAGARA—The standard white grape. Both bunch and berries are large to very large, handsome, and well formed.

WORDEN—A black grape, high quality, and ripens earlier than Concord.

Raspberries

CUMBERLAND RASPBERRY—The largest of all blackcaps; firm and a good shipper, and one of the most profitable as a market berry. **Price, \$1.25 per 25; \$3.00 per 100; prepaid.**

LATHAM—Has proved to be the very best of all the everbearing sorts, for most sections. Splendid strong growing kind produces immense quantities of bright red extra large berries. **Price, 25 for \$1.25; 100 for \$3.00; prepaid.**

CHIEF—New variety. Ripens earlier than Latham, greater hardiness, more disease resistant, bears more abundantly. Fruit

bright red, somewhat smaller than Latham. One of the most profitable. **Price, 25 for \$1.25; 100 for \$3.00.**

Blackberries

ELDORADO—Comparatively new variety, and has proven to be the best of all blackberries under cultivation. Very hardy. Fruit very large, jet black, good shipper, good quality, great producer. **Price, 25 for \$1.00; 100 for \$3.70; prepaid.**

Dewberry

LUCRETIA DEWBERRY—Hardy, productive, best variety, sweet. Highly recommended. **Price, 25 for 90c; 100 for \$3.25; prepaid.**

SHRUBS

See Page 13 for Additional Shrubs

Rhodotyphus Kerroides

Sometimes called the White Kerria. A very ornamental, deciduous much-branched shrub, usually from three to seven feet, handsome and distinct, and is hardy as far north as Massachusetts. Has bright green foliage. Made very conspicuous by its white flowers in May or June and black fruits in the fall. **2-3 ft., 35c each; 2 for 60c; prepaid.**

Spindle Tree—Euonymus

BURNING BUSH (Corky Bark) (Alatus)—An attractive, ornamental shrub to eight feet. The flowers appear in May and June. In autumn the foliage changes to a fine rose color. **2-3 ft., 45c each; prepaid.**

STRAWBERRY BUSH (Americana)—An ornamental, upright shrub to eight feet. The flowers appear in June, are yellowish or reddish green, followed by pink fruits which are very attractive. **2-3 ft., 35c each; 2 for 60c; prepaid.**

Regels Privet

A low, dense shrub with horizontal spreading branches. The leaves are oblong and a beautiful glossy green. In the fall of the year they are covered with attractive berries. Very useful as a low shrub in foundation plantings. **18-24 in., 35c each; 3 for \$1.00; prepaid.**

Japanese Fire Bush

CYDONIA—Common garden form, growing from 3 to 6 ft., with spreading, spiny branches. The scarlet-red flowers appear before the leaves and are followed by globular fruits from one and one-half to two inches high. **2-3 ft., 35c; 2 for 65c; prepaid.**

Viburnum—Snowball

ARROW WOOD (Dentatum)—A gorgeous upright, native shrub, thriving best in moist soil. Doing well from New Brunswick to Minnesota. It blooms in May or June, followed by black fruit. **2-3 ft., 40c each; 2 for 75c; prepaid.**

HIGH BUSH CRANBERRY (Opulus)—Handsome native shrub attaining twelve feet. Pure white flowers appear in May and June, followed by decorative fruits, and remain on the branches and keep their bright scarlet color until the following spring. **18-24 in., 30c; 2 for 55c.**

Weigelas

ROSEA—A choice vigorous sort, which yields an immense crop of deep pink trumpet-like flowers in June, and bears a scattering of blossoms through the rest of the season. **2-3 ft., 35c; 2 for 65c.**

EVA RATHKE—The flowers are a deep carmine red, erect growing. A most profuse bloomer in spring and again in autumn. **18-24 in., 50c; 2 for 95c; prepaid.**

PERENNIALS

Old Fashioned Hardy Flowers for New Fashioned Gardens
ALL PLANTS FIELD GROWN **BLOOM FIRST YEAR**
 Price, 15c each; 3 for 40c; prepaid, except where noted

Agrostemma

ROSE CHAMPION—Stout, erect-growing plants with silvery foliage, which contrasts well with the showy flowers, which are produced during June and July.

CORONARIA (Mullein Pink)—Bright rosy crimson. 2½ to 3 feet high.

Aquilegia-Columbine

ENGLISH LONG SPUR—A fine strain producing distinct strains of purple, blue, red and yellow flowers.

AQUILEGIA (Mrs. Scott Elliott)—Hybrids. Lovely blending of pastel shades. Mixed plants.

AQUILEGIA (Dobbie's Mixed)—Special selection of many delicate and new shades, and with very long spurs.

ARTEMESIA, SILVER KING—A striking white-leaved contrast plant. A beautiful "mist" for setting off bouquets and floral combinations. The entire color effect bright frosted silver. Three feet high. Sprays may be cut to mix with winter bouquets.

Baptisia

AUSTRALIAS (False Indigo)—Attractive dark green foliage, dark blue pea-shaped flowers produced in June on top of spikes 2 ft. high.

Dicentra

SPECTABILIS BLEEDING-HEART—The Bleeding-heart is one of the choicest memories of the old-fashioned garden. **Price, 35c each; 3 for \$1.00; prepaid.**

Campanula

CANTERBURY BELLS—Large open bell-shaped flowers. Blue, pink, and mixed.

CUPID'S DART (Catanche Coerulea)—From a low-growing clump of narrow leaved foliage, the heads of pretty deep blue flowers arise on long, slender stems. July and August.

Centaurea

MONTANA (Perennial Cornflower)—2 ft. high, bears large violet blue flowers. July to September.

DEALBATA—Large and striking rose pink flowers. June to July. 2 ft. high.

MACROCEPHALA—Large, thistle-like golden yellow flowers, 3½ ft. high. Useful for cutting and showy in borders. July to August.

Coreopsis

LANCEOLATA—Valuable border plant, because of their profusion of showy yellow, hardy and of the easiest culture. One to two feet. June to September.

Daisy Shasta

ALASKA—A splendid form of the Shasta Daisy. The whole plant is gigantic, but compact and graceful; flowers white, four and five inches across. Very free flowering; small yellow discs. Good for cut flowers.

Delphiniums—Imported Strains

WONDERFUL HYBRIDS—Here offered are the newest, the best and the finest to be secured anywhere. The range of colors varies from the palest shade of blue to the deepest indigo blue and royal purple with many intermediary pastel tones of mauve, pink, and lavender blendings. Among these new hybrids are flowers of huge size in both single and double forms. This strain has been raised from the finest named kinds in creation. Visitors at our nursery proclaim them the best they have ever seen. **Mixed colors, 20c each; 3 for 50c; prepaid.**

WREXHAM STRAIN—Single and double, range of color varies, includes pale blue, royal purple, pastel shades of pink, mauve and lavender. Our best. **Price, 20c each; 3 for 50c.**

QUEEN-OF-THE-BLUES (Chinese Larkspur)—A very pretty variety with fine feathery foliage and intense blue flowers.

DIGITALIS-FOXGLOVE (Grandiflora)—2- to 3-foot spikes in June and July. A hardy plant, with yellowish flowers, marked with brown.

DIANTHUS BARBATUS (Sweet Williams)—One of the loveliest of old fashioned flowers. Profuse bloomers. Splendid for cutting. White, pink, and red. **15c each; 3 for 40c.**

DIANTHUS PLUMARIS (Old Fashioned Clove Pinks)—Pink and white, fragrant flowers on long spikes. Handsome, glaucous green foliage. For border.

Grass

ELYMUS GLAUCUS (Blue Lime Grass)—Handsome Grass with narrow, glaucous silvery foliage. Well adapted for the border or edge of beds with taller sorts.



Columbine



Fox Glove



Larkspur



Sweet William



Shasta Daisy

PERENNIALS

Price, 15c each; 3 for 40c; prepaid, except where noted.

Chinese Lantern Plant

FRANCHETTI—Forms dense bushes 2 ft. high, producing bright orange scarlet lantern like fruits, which are very interesting for indoor decorations.

Funkia Day Lilly

SUBCORDATA—Large pure white day lily, fragrant flowers, blooms August and September.

COERULEA—Broad green leaves, blue flowers. July to August.

Gaillardia or Blanket Flower

Blood-crimson, margined with golden yellow.

Gypsophila or Baby's Breath

PANICULATA—Branching or spreading slender perennials and very desirable, misty white bloom.

HARDY AGERATUM—A pretty, hardy plant, with light purple flowers, in flower from August until frost. 12-24 inches. Good cut flower.

Hemerocallis

FLAVA (Yellow Day Lily)—Popular hardy plants; belong to the Lily family. Succeed everywhere, should be included in the border of old-fashioned hardy plants.

FULVA—Coppery orange shaded to crimson. 3 feet. Blooms in July.

HOLLYHOCKS—Immense flowers; all shades and colors mixed.

HIBISCUS (Mallow Marvels)—A robust type of upright habit, producing an abundance of flowers of enormous size in the richest shades of crimson, pink and white mixed.

FLOWERING FLAX (Linum Perenne)—Very attractive both in foliage and bloom. Pale blue on slender, graceful stems.

Lobelia

CARDINAL FLOWER—Rich fiery red flowers; strong plants often producing 10 to 18 spikes in August and September.

LOBELIA (Great Blue Lobelia)—Flower is blue streaked with white. Plant in moist place.

Lychnis

CHALCEDONICA (Maltese Cross)—Heart-lobed stars of brightest vermilion, arranged in large flat panicles.

MONARDA (Oswego Tea)—Showy plants succeeding in any soil or position with aromatic foliage, flowers during July and August.

Phlox

AFRICA—New, brilliant red, well shaped flower heads. One of the best new dark red. Price, 20c each; 3 for 50c.

COMMANDER—Deep crimson with darker eye. Produces a number of spikes. Price, 15c each; 3 for 40c.

FUERBRAND—Orange scarlet, free bloomer. Price, 15c each; 3 for 40c.

JULES SANDEAU—Brilliant pink blossoms, somewhat dwarf in habit but a very free and long bloomer. Price, 15c each; 3 for 40c.

MIA RUYS—New, best white, rather dwarf but produces enormous heads of large pure white flowers. Price, 20c each; 3 for 50c.

MISS LINGARD—Early, beautiful foliage, large heads of white flowers with light pink eye. Price, 15c each; 3 for 40c.

ISABEY—Light blue, very fine. Price, 15c each; 3 for 40c.

Poppy

PAPAVER ORIENTALE (Oriental Poppy)—One of the most striking flowers of the perennial border. After blooming in June the plants die down and disappear, making rosettes of foliage in late fall, and stay green all winter. Assorted colors.

Platycodon

JAPANESE BELL FLOWER—A valuable perennial forming a dense branching bush of upright habit. One to two feet with neat foliage. It blooms from July until frost. Large bell shaped deep blue flowers.

PYRETHRUM OR PAINTED DAISY (Roseum)—Attractive fern-like foliage. Rose colored flowers, good for cutting. Bloom May and June.

RUDBECKIA (Golden Glow)—Hardy. Six feet high, double golden yellow flowers, shaped like a Cactus Dahlia.

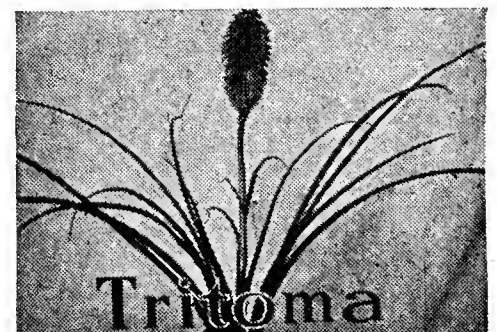
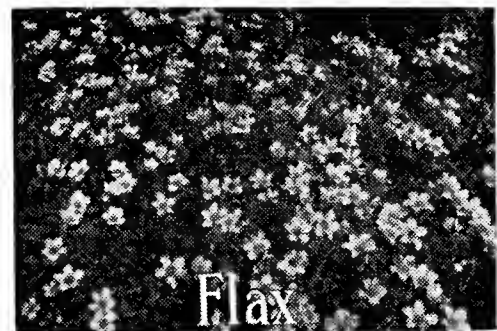
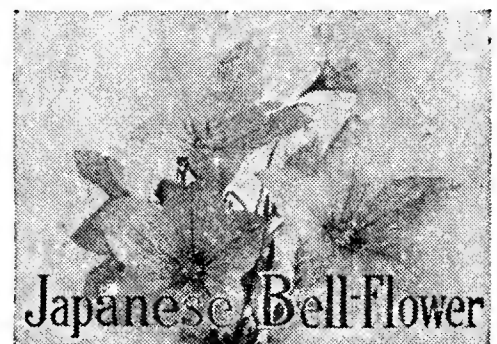
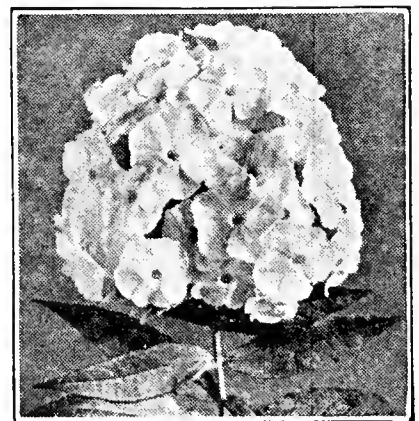
GIANT PURPLE CONEFLOWER—Most attractive purple flowers, with a very large, brown, cone-shaped center. Blooms from July to October. 3 ft. high, a splendid plant for the border.

Tritoma, Red Hot Poker

TRITOMA (Red Hot Poker)—It will bloom the first season sending up tall flower stems on which are borne the great blossoms of bright red.

Yucca Adam's Needle

FILAMENTOSA (Adam's Needle)—Effective and striking for isolated positions on the lawn. Indispensable for the rockery. Its broad, swordlike, evergreen foliage and immense branching spikes of drooping creamy white flowers, rising to a height of 6 feet.



ROCK PLANTS

PLANT NOW FOR EARLY SPRING BLOOM

Prices, 15c each; 12 for \$1.50; prepaid



ACHILLEA ROSEUM (Rosy Millfoil)—July to October. Rosy pink flowers in dense heads. Very beautiful finely cut green leaves. Suitable for dry sunny places, useful for carpeting rockeries.

ACHILLEA (The Pearl)—Pure white, double flowers all summer. Prized for cutting.

ANCHUSA (Myosotidiflora)—Dwarf plant, blue flowers resembling for-get-me-nots. May and June.

ANEMONE PULSATILLA (Pasque Flower)—Grows from 9 to 12 inches high and produces violet or purple flowers during April and May.

ANTHEMIS-CHAMOMILE (Tinctoria)—Handsome, finely cut foliage, and large golden yellow flowers produced all summer.

Succeeds in the poorest soil.

ASTER (St. Egwin)—A pleasing rosy pink; very free blooming; dwarf habit. September.

CERASTIUM TOMENTOSUM (Snow in Summer)—Low growing plant with silvery white foliage and snow white flowers in May.

CHRYSANTHEMUM (Korean)—Newer Perennials. For late fall effects nothing can equal. Large white flowers with golden center often turning to shell pink.

DIANTHUS DELTOIDES (Maiden Pink)—A pretty little ground cover plant of deep green foliage from which in May and June myriads of small crimson flowers arise.

DIANTHUS ARENARIUS (Sand-Loving Pink)—Flowers white with carmine ring, deeply fringed and fragrant. Excellent for dry hot places. 6 inches.

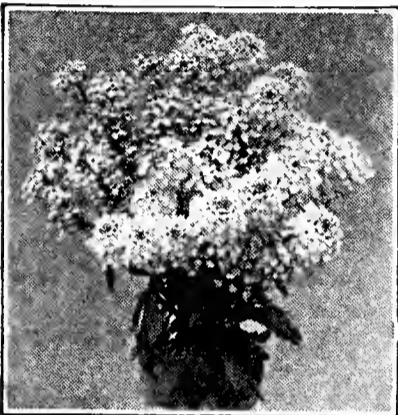
DICENTRA EXIMA (Dwarf Everblooming Bleeding Heart)—Compound racemes of deep rose. Foliage is especially attractive and bloom persistent all summer.

ALPINE SNOWFLOWER (Edelweiss)—This alpine beauty is well known to tourists who have traveled in Switzerland. Should be grown either on the rockery or in well-drained, sandy soil. Low growing with silvery white leaves, star-like flowers covered with white wool.

GYPSOPHILA REPENS (Creeping Baby Breath)—A beautiful trailing plant for the rockery, with clouds of small white and pink flowers in July and August.

HEUCHERA (Coral Bells)—Heart shaped leaves, dainty bright red blooms in graceful sprays. Excellent for cutting. Sunny position.

CANDYTUFT (Hardy)—Hardy form of old-fashioned Candytuft, growing 8 to 10 inches in height with dense heads of bright flowers early in the spring. Full sun or part shade.



Candytuft

LYCHNIS (Alpina)—Dwarf, rose-pink. A charming little plant for the rock garden, about 4 inches high.

OENOTHERA—EVENING PRIMROSE (Youngi)—A strong, stocky, large-leaved plant with firm, shiny foliage, numerous bright lemon-yellow flowers on stems about 24 inches tall, from June to August.

PHLOX SUBULATA (Rosea, Moss Pinks)—Moss like evergreen foliage, prolific blooms invaluable for the rock garden.

SCUTELLARIA—SKULL CAP (Coelestina)—Short, wiry stems, one foot high, clothed with clear, blue Snapdragon-shaped flowers during July and August; a very good plant for the rock garden.

SEDUM (Dwarf Varieties)—15c each; \$1.00 per dozen.

ACRE (Golden Moss)—Much used for covering graves, foliage green; flowers bright yellow.

ALBUM—Dwarf and spreading; thick, waxy round foliage, white flowers; good rock plant.

SPURIUM COCCINEUM—A beautiful rosy crimson flowered form; July and August. 6 inches.

SPECTABILE—Erect growing, 18 inches, with broad, light green foliage and immense heads of handsome, showy, rose colored flowers; indispensable as a late fall-blooming plant.

SEMPERVIVUM (Hen and Chickens)—Succulent plants of rosette like thick leaves, spreading habit. Very interesting. **BRAUNI**—Large rosettes, bronze green leaf with almost red tip.

GLOBIFERUM—Flattened rosettes, grey green leaves tipped brown, pale yellow flowers.

LEMON SCENTED THYME—Thyme makes a close fragrant green carpet, excellent for use between stepping stones or in the rockery. Soft lavender flowers, delightfully fragrant.

TUNICA SAXIFRAGA (Coat Flower)—From a clump of fine lacy foliage the tiny pink flowers are put forth throughout the summer. Excellent in rockery or border.

VERONICA (Royal Blue)—Beautiful spikes of rich gentian blue flowers. One of the best for the rockery; 8 inches; June and July flowering.

Write our Landscape Department for Free Advice for planting your Rock Garden.



Edelweiss

We will send 25 rock plants, our selection, all desirable and suitable for any rock garden for \$2.50, prepaid.

ROSES

THE LOVELIEST FLOWER OF ALL

Tea and Perpetual Roses

Tea Roses are Marked (T) Perpetuals Marked (P)
Prices, any variety below, 2 yr. old, field grown, first
class, 40c each; 3 for \$1.00; prepaid.

FRAU KARL DRUSCHKI, (P) or WHITE AMERICAN BEAUTY or SNOW QUEEN—Best snow-white Rose ever introduced. Strong grower. Immense in size and produced with great freedom.

GRUSS AN TEPLITZ (T)—Fiery crimson, shaded with a dark velvety sheen. Double flowers. Incomparable for fragrance.

KAISERIN AUGUSTA VICTORIA (P)—Creamy white and sweetly fragrant; buds are large and pointed and flowers very full and large. Very hardy.

PINK KILLARNEY (T)—Color deep, brilliant, sparkling shell-pink; hardy everywhere.

MARGARET McGREDY—One of the few good novelties; red, rose, and flame on the upper side of the petals, the under surface suffused with gold—a wonderful contrast; very free and prolific bloomer and extremely hardy.

OPHELIA (T)—Salmon-flesh, shaded rose, flowers stand up well.



Ophelia Rose

PRESIDENT HERBERT HOOVER—The best American introduction of recent years. Hardy and free flowering, a blending of maroon, orange, and gold.

RED RADIANCE (T)—Big, globular flowers of deep rose-red on strong, individual canes which are freely produced all summer.

SOUV. DE CLAUDIUS PERNET (T)—The most satisfactory yellow rose ever produced. A decided yellow, even deeper toned at center. Flower is large and full with elongated petals; buds long and pointed.

SUNBURST (T)—Fine yellow flowers, orange at center, fragrant, and well shaped. Very beautiful.

TALISMAN (T)—Brilliant red and gold buds, opening to well-shaped blooms of scarlet-orange and rich yellow. Tall, vigorous growth. Constantly in bloom. The most vivid color yet produced in Roses.

HARDY CLIMBING ROSES

2 yr. old first class, 30c each; 4 for \$1.00; prepaid.

CLIMBING AMERICAN BEAUTY—American Beauty Rose in climbing form. Has all the characteristics of its relative, including form and fragrance. Healthy foliage and has strong climbing habit of growth; the abundant bloom being in prime before the June show of the bush variety.

EXCELSA—A sensational new hardy climbing rose, sometimes called "Red Dorothy Perkins." This great new rose is nearly evergreen and is absolutely hardy. Flowers very double, produced in immense trusses. Intense crimson; new and distinct.

DOCTOR VAN FLEET—Flower when open runs 4 inches or more in diameter in which it compares with the Tea class. Center built high, petals undulated and cupped. Color is a remarkably delicate shade of flesh-pink. Admirable cutting variety with stems 12 to 18 inches long.

FLOWER OF FAIRFIELD (The New Everblooming Scarlet Rambler)—Commences flowering in the spring or early summer and produces repeatedly. It blooms very profusely on young wood the first year. Very effective for covering walls, trellises or arches, equally attractive for table decorations.

GARDENIA (H. W.)—Bright yellow, cream color, double, very fragrant, early flowering. This is the hardy Marechal Niel.

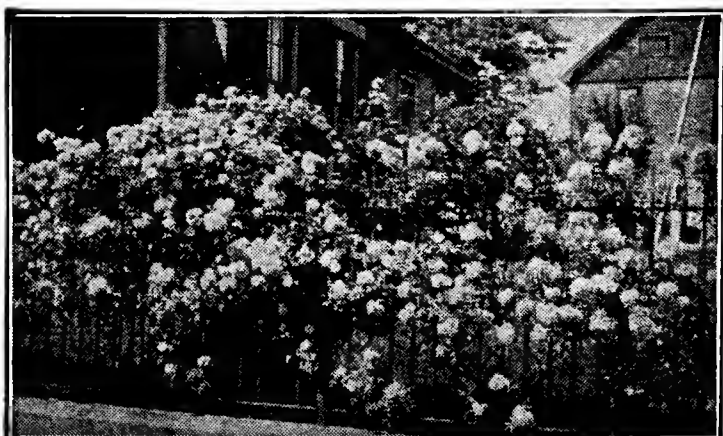
MARY WALLACE—Hardy as far north as Central Ohio. Blooms two or three times during the summer. Bright clear rose-pink with salmon at base of petal.

PAUL'S SCARLET CLIMBER—A wonderful Rose for trellis or pergola. Winner of Gold Medal as best new climbing rose at National Rose Society's Exhibition. Scarlet, shaded crimson. Corresponds to the Climbing American Beauty and Dr. Van Fleet as to size, shape and habit. Blooms very long, holding flower after many June bloomers have dropped their petals.

ROSA HUGONIS (A New Bush Rose from China)—Like many other rare floral gems from the Orient, this variety is spectacular in its exotic beauty. Imagine a many-branched shrub, 6 to 8 feet tall, rearing slender sprays in all directions, gracefully arching beneath loads of bright yellow single flowers an inch and a half in diameter. Strong field-grown plants, each 40c; 2 for 70c, prepaid.



Talisman Rose



Excelsa Climbing Rose.

HARDY SHRUBS

AT LOWEST POSSIBLE PRICES ALL PREPAID

These shrubs, all shedding their foliage in the winter are quite hardy, and will thrive in practically all sections. They make a rapid and luxuriant growth. Many varieties are used in foundation plantings, and others are desirable for flowers and berries.

Althea—Rose of Sharon

Bright green leaves and great abundance of variously colored flowers make it very effective when planted as a hedge. Blue-purple to violet-red, flesh color and white. There are also double forms. 2-3 ft., 25c; 3 for 70c; prepaid.

Aralia Spinosa

SPINOSA (Hercules Club, Angelica Tree, Devil's Walking Stick)—15 ft. Stout, prickly stems, large leaves, enormous clusters of flowers, gives sub-tropical appearance. 45c each; 2 for 85c; prepaid.

ARALIA (Pentaphyllum)—Five leaved Aralia. Yellow, June. Hardy shrub, thriving in adverse soil and city conditions, foliage attractive. 2-3 ft., 35c; 3 for \$1.00; prepaid.

Barberry—Berberis

JAPANESE (Thunbergi)—Grows low and dense, making it very adaptable for planting along walks and borders. Every driveway can be beautified greatly by planting Barberry. 12-18 inches, 20c each; 18-24 inches, 30c each; 4 for \$1.00.

RED LEAVED BARBERRY—Finest shrub in recent years. Bright red in the spring, stays red through the summer and deepens to a deep crimson in the fall. Red berries stay on all winter. Unequaled for bright coloring. All that is required to develop its brilliant coloring at all seasons is that it be planted in full exposure of the sun. 18-24 in., 25c; 5 for \$1.00.

Butterfly Bush—Buddleia

SUMMER LILAC (Varibilis Magnifica)—Semi-herbaceous plant; it will die down to the ground. We recommend covering the roots with manure as winter approaches. Blooms the first season; the blossoms are borne on long, graceful stems which terminate in tapering panicles of lilac-covered flowers that are of miniature size. Flower head ten inches long. 25c each; 3 for 70c.

Deutzia

PRIDE OF ROCHESTER—Showy, early, large-flowering sort; blossoms in May before others. Grows 6 to 8 feet high. White flowers, large and double. 18-24 in., 30c each; 4 for \$1.00.

GRACILIS—A handsome, dwarf and bushy little shrub with slender, often arching branches. A neat shrub that blooms in May, clothing its branches in pure white flowers. Valuable for shrubberies or for forcing. 12-18 inches, 35c; 2 for 65c.

Golden Bell—Forsythia

FORTUNE'S—Grows with upright or arching branches. 18-24 in., 25c each; 2-3 ft., 35c each; 3 for \$1.00.

Hydrangea

ARBORESCENS GRANDIFLORA (Hills of Snow)—The flowers are, in a large way, similar to the familiar "Snowball" in appearance; conspicuously white and imposing. July to September. By cutting back to the crown each spring, the bushes may be kept round and dense at a normal height of 3 to 5 feet. They are excellent for solid low borders or in foundation plantings, which will allow for about four feet. 18-24 in., 35c; 2 for 65c.

PANICULATA GRANDIFLORA—Fine tall hedges, or if planted in rich soil and severely pruned every spring before the leaf buds open, will get to be very dense, dwarf clumps of compact form; wonderfully attractive when laden with their massive white plumes. Large beds, kept at a uniform development are extremely showy, first, snowy white, then

pink, then reddish bronze and green. 18-24 in., 35c; 4 for \$1.00.

HYPERICUM (St. John's Wort)—Shrubs and herbs, with mostly yellow flowers. The form is compact and rounded, with somewhat persistent leaves. 18-24 in., 35c; 3 for \$1.00; prepaid.

Lilac—Syringa

Old Fashioned Fragrant Flower
35c each; 3 for \$1.00

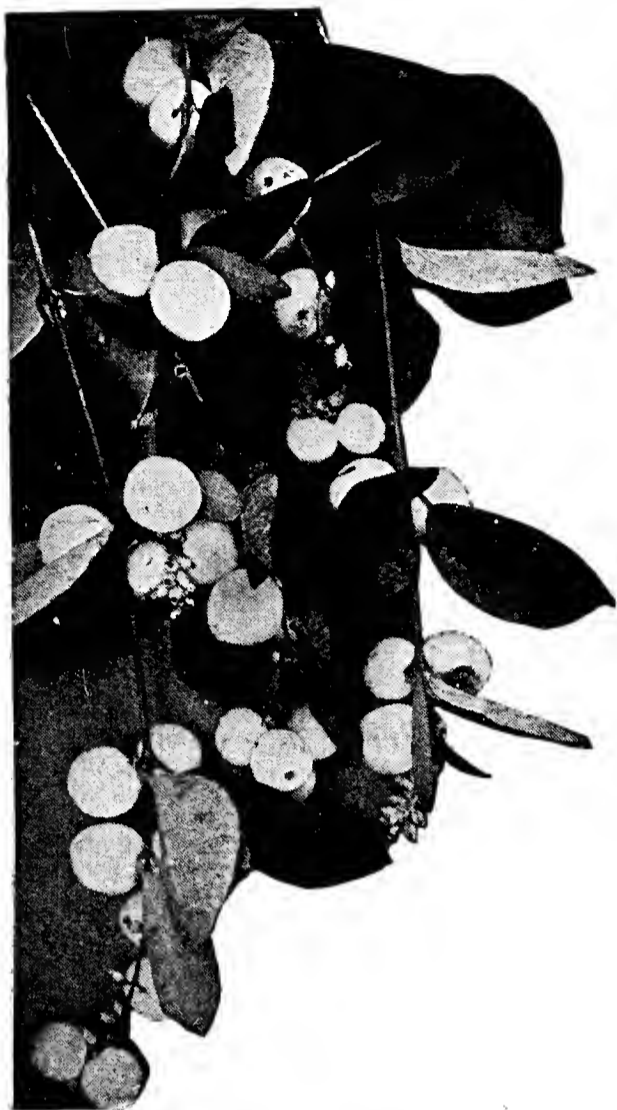
CHAS. X — Large, rather loose, reddish purple trusses.

MME. LEMOINE — One of the best double white.

PRES. GREVY — Large, double blue flowers.

PERSIAN LILAC—Long arching branches, good foliage, lavender flowers.

Write our landscape department for free advice for planning your shrub border.



White Snowberry

8 feet high. White flowers, large and double. 18-24 in., 30c each; 4 for \$1.00.



Lilac

SHRUBS

PREPAID PRICES

Honeysuckle—Lonicera

TARTARIAN (*Tartarica Alba*)—This is one of the old-time favorite shrubs. Ten feet in height and is extremely easy to cultivate. 18 to 24 in., 35c; white, 2 for 65c.

TARTARICA ROSEA—Same as above excepting flower pink. 18-24 in., 35c; 2 for 65c.

Philadelphus

SYRINGA GRANDIFLORA—Large, flowering shrub, growing to about eight feet, with spreading branches, upright and vigorous, flowers slightly fragrant. Rapid grower and most hardy. 18-24 in., 30c; 2-3 ft., 35c each; 3 for \$1.00; prepaid.

PHILADELPHUS VIRGINAL (Blooms throughout the season)—This is a new and wonderful addition to the Mock Orange family. One of the most beautiful shrubs grown. 18-24 in., 30c; 2-3 ft., 35c; 3 for \$1.00.

Robina Hispida

PINK FLOWERING LOCUST—Elegant clusters of rose-colored flowers, which expand toward the last of May and continue for some time. The branches resemble the Moss Rose. Beautiful in masses. 2-3 ft., 35c each; 3 for \$1.00; prepaid.

Pussy Willow

PUSSY WILLOW (Not the Wild Pussy Willow)—Dainty silvery flowers every winter. A beautiful round shrub in summer. Wherever you have room for a Lilac or Snowball, you have room for a Pussy Willow. Use them for tall screens or backgrounds. Cut the ends of the branches in January or February. Place them indoors in a vase of water. Watch them unfold their large catkins of silvery pink, from 1 to 2 inches long. Price, 2-3 ft., 35c, prepaid.

Rhus Cotinus—Smoke Tree

Unique, spreading tree-like shrub with large leaves. Overhung in midsummer by cloud-like masses of very light, mist-like flowers, having the appearance of smoke. Foliage changing to a brilliant shade of red and yellow in autumn. 35c each; 3 for \$1.00.

Snowberry

SYMPHORICARPUS (White Snowberry)—Hardy shrub from two to three feet high, excellent for massing in the lower parts of a bed or border. Rose-colored flowers appear in July and August. The white waxy-like berries remain on until late in the autumn. 2-3 ft., 30c; 2 for 55c; prepaid.

SNOWBERRY, RED—Slender arching shrub, very showy in autumn when covered with bunches of bright, coral pink, small fruits which hang on nearly all winter. 2-3 ft., 30c; 2 for 55c; prepaid.

Spiraea - The Most Popular Shrub

ANTHONY WATERER (F) — Bright pink, June and July. A compact low-growing shrub with dense foliage. Flowers are borne in full flat clusters on erect stems. Very valuable for edging in front of shrubbery or as a dwarf hedge. 12-18 in., 30c; 2 for 55c; prepaid.

SPIREA BILLARDI—Erect-growing with dense spikes of rose-pink flowers in July and August and again in the fall. 4 to 6 feet high. 2-3 ft., 35c; 3 for \$1.00; prepaid.

NEW SPIREA RICHEMENSIS—Upright growing spike-like flowers. Blooms practically the entire summer. Pink. Rare and worthwhile. 18-24 in., 30c; 2 for 55c; prepaid.

SPIREA VAN HOUTTEII—4-6 ft. White. May. This is the most useful of the hardy shrubs. The flowers are in flat clusters usually an inch or more across produced on spreading, pendulant branches often drooping to the ground. 18-24 in., 25c; 3 for 60c; prepaid.

Tamarix

These plants are very beautiful all the year, in winter for their coloring of the bark and in summer for the light green, feathery foliage and large loose panicles of purplish flowers.

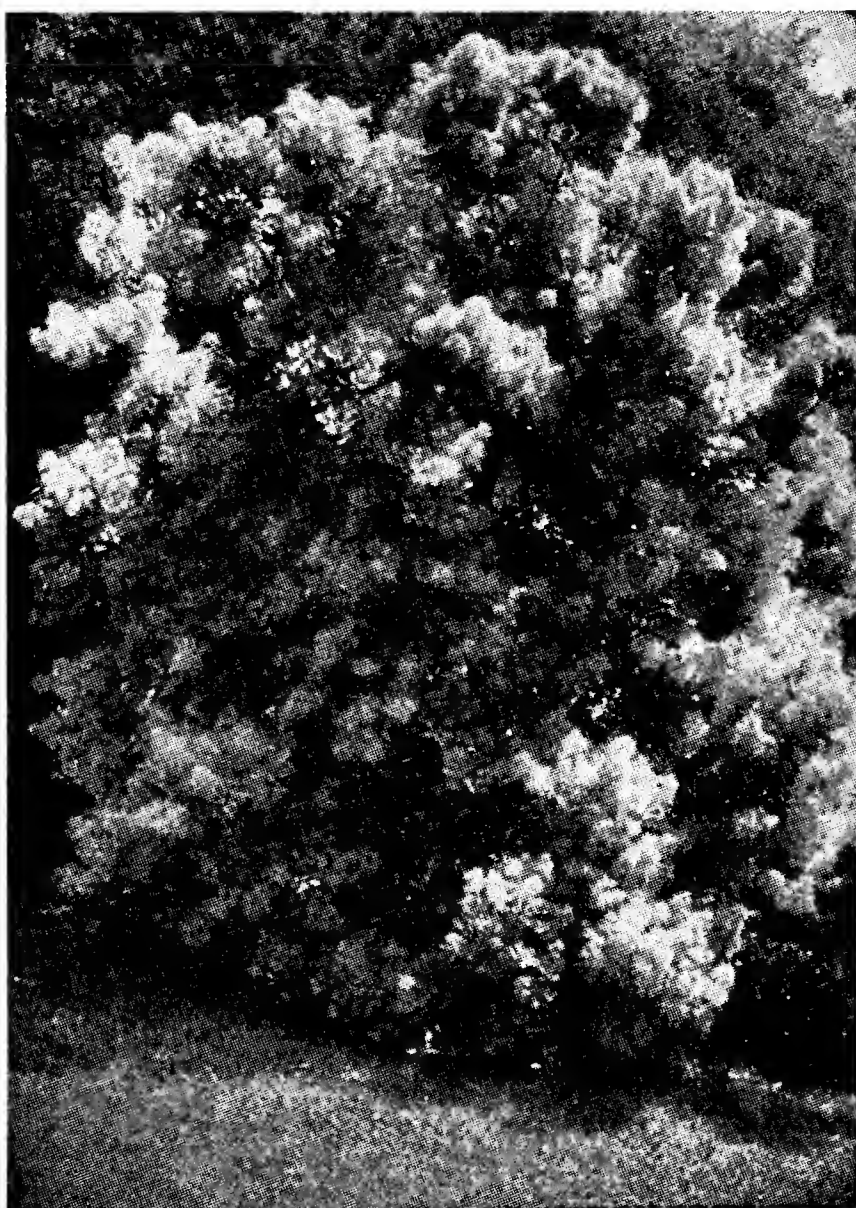
AFRICANA — Is an upright grower. Blooms in May. 2-3 ft., 35c each; 3 for \$1.00; prepaid.

HISPIDA — A graceful shrub; upright branches, flowers pink, appearing in August. 2-3 ft., 35c; 3 for \$1.00; prepaid.

See page 7 for additional shrubs



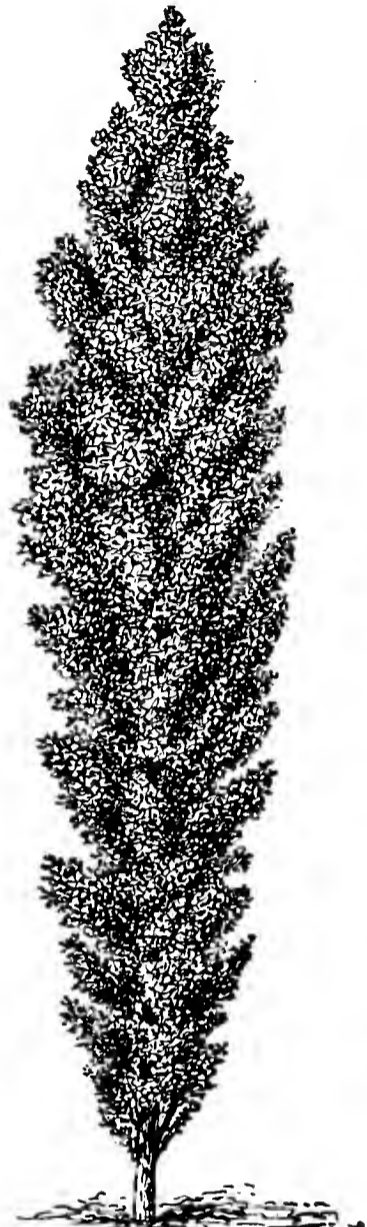
French Pussy Willow



Smoke Tree

Ornamental TREES Shade

ON ORDERS FOR TREES OF \$10 OR MORE WE WILL PAY TRANSPORTATION COST



LOMBARDY POPLAR

Ash—Fraxinus

EUROPEAN MOUNTAIN (Sorbus Aucuparia)—An ornamental deciduous tree with beautiful foliage which turns orange red in fall; fruits showy, often remaining all winter. 6-8 ft., \$1.00; not prepaid.

Elms—Ulmus

AMERICAN (Americana)—Very valuable for park planting for avenues, and as a shade tree for lawns. One of the most majestic and graceful of our shade trees. Hardy, a rapid grower, resists drought well, long lived. 6-8 ft., 75c; 8-10 ft., \$1.00; not prepaid.

ULMUS PUMILA (A New Variety of Elm)—A native of China. Rapid-growing tree. Forming a very dense head, with smaller, darker leaves than the American Elm. 6-8 ft., \$1.00; 8-10 ft., \$1.50; not prepaid.



Norway Maple

Maple—Acer

SILVER (Saccharinum)—Best known of all Maples. Wide, slender spreading branches. Thrives almost anywhere. 6-8 ft., 75c; 2 for \$1.25; 8-10 ft., \$1.00; 10-12 ft., \$1.25; not prepaid.

NORWAY (Platanoides)—Large, handsome tree with a compact rounded head. One of the best and most beautiful trees for the street, the park, cemetery, or lawn planting. 6-8 ft., \$1.00; 8-10 ft., \$1.50; not prepaid.

SCHWEDLERII (Purple-leaved Norway Maple)—In early spring the young leaves are bright red, changing to purplish green as they grow older. In autumn they are golden yellow. 6-8 ft., \$1.25; 8-10 ft., \$1.50; by express, not prepaid.

Poplar

LOMBARDY (Nigra var. Italica)—The Lombardy Poplar becomes one of the most striking and picturesque trees, particularly when some of the sprouts are allowed to grow about the old stock. 6-8 ft., 40c; 2 for 75c; 8-10 ft., 75c; 2 for \$1.40.

Weeping Willow

GOLDEN WEEPING (Elegantissima)—A strong and the most vigorous grower of all the weeping willows. For planting in low places or on the banks of streams, springs, lakes or ponds making a very beautiful effect. 6-8 ft., 75c each; 2 for \$1.40; not prepaid.

Magnolia Tree

The finest magnolia grown. It grows as far north as Detroit. Immense cupshaped flowers 4 to 5 inches across. The flowers, appearing before the foliage, create a wonderful scene and can be seen for blocks. 12-18 in., \$1.25 each; 3 for \$3.25; prepaid.

The Rose Tree of China

THE ROSE TREE OF CHINA (Prunus Triloba) is the most beautiful and showy of all small trees. Blooms before the leaves appear in the spring, with double rose-like pink flowers. As an ornament from early spring until late fall it has few equals. 2-3 ft., 65c each; by parcel post; prepaid.

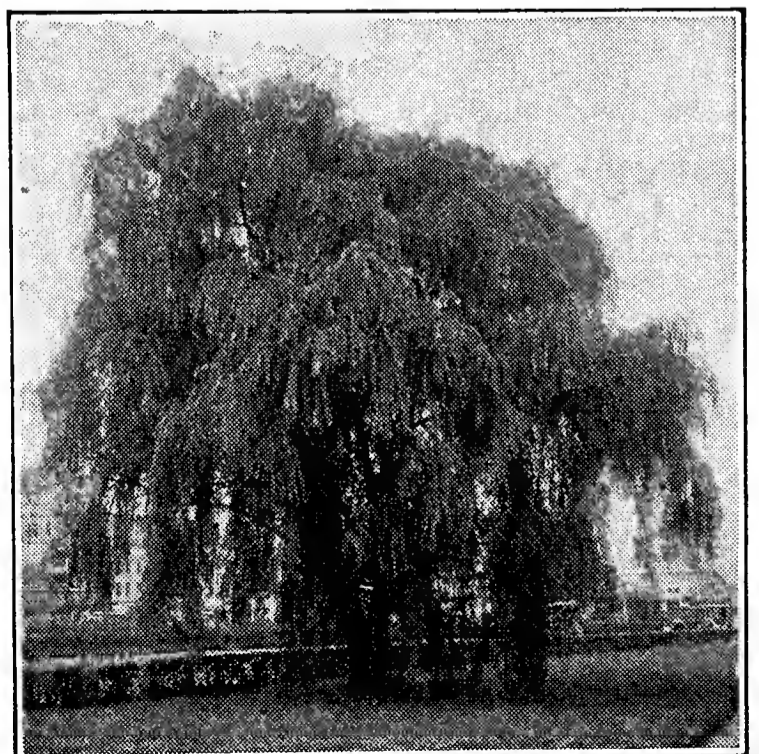
CATALPA BUNGEI (Umbrella Tree)—Just the tree to be used for formal effects. Propagated on a stem of the Catalpa Speciosa. It makes a very unique ornamental tree. Has a broad, dome-shaped head at the top of a long straight stem. When the tree attains its full growth the top is often 15 feet in diameter and not over 3 to 4 feet tall on top of a strong stem from 5 to 7 feet in height. An exceptionally hardy variety. 5 to 7 ft., 1 year heads. 80c each; 2 for \$1.50; not prepaid.

Cercis

AMERICAN RED BUD—Exceedingly showy small tree in early spring when covered with small bright cerise flowers. Makes brilliant effect. 4-5 ft., 75c; 2 for \$1.35; not prepaid.

Laburnum

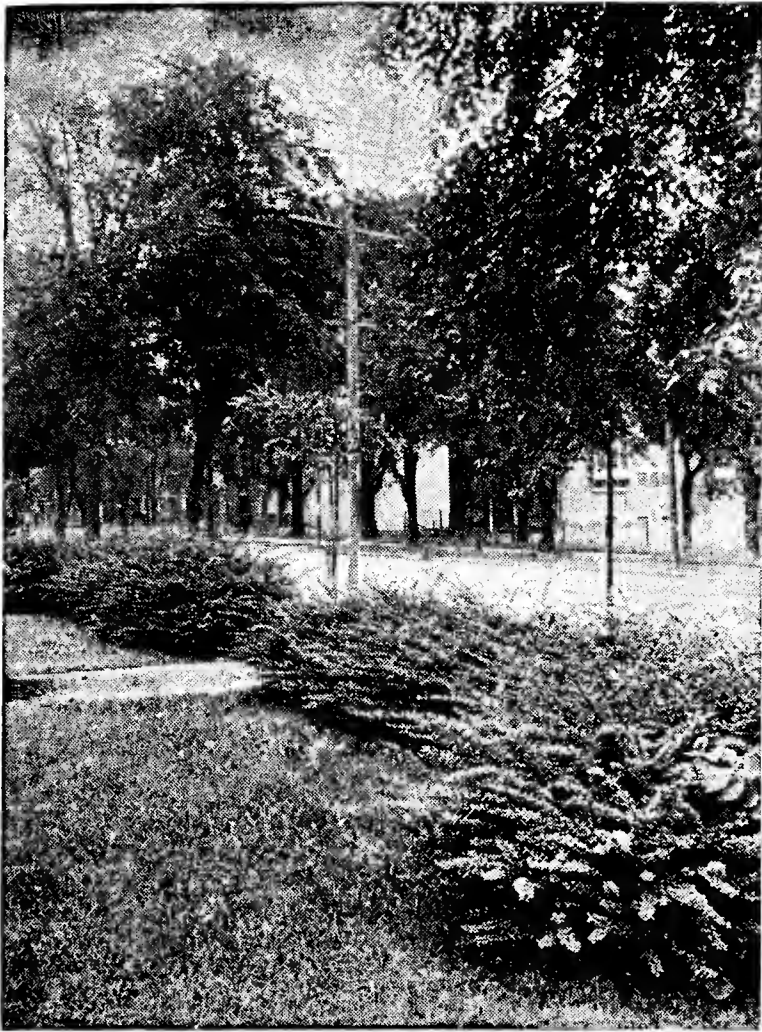
GOLDEN CHAIN TREE—Small tree about 20 ft. high, with long clusters of bright yellow pea-shaped flowers, looking something like wisteria. Very ornamental. 2-3 ft., 35c each; 3 for \$1.00; prepaid.



Weeping Willow

HEDGE PLANTS

BEAUTIFY WITH HEDGES



Japanese Barberry

Hardy Cactus

OPUNTIA RAFINESQUII—Will stand 20 degrees below zero. Can be grown indoors or outdoors. Fine for rockeries, border for evergreens, banks, perennial beds, etc. Is large semi-double yellow flowers 4 in. across. Easily grown. 40c, prepaid.



Cactus

HARDY VINES

Clematis

PANICULATA—Extremely showy when covered with small white fragrant flowers which appear late in the season. Beautiful, shiny, green foliage. 2-year-old No. 1 plants, 40c each; 3 for \$1.00; prepaid.

Bittersweet

SCANDENS CELASTRUS—Bright-colored fruit remaining usually throughout the winter. Grow in almost any soil and situation. Fruit is orange-yellow, with crimson seed. 35c each; 3 for \$1.00; prepaid.

Honeysuckle

LONICERA (Hall's Japan Evergreen Honeysuckle)—Honeysuckles are well adapted for the covering of walls, arbors, etc. Leaves remain on during the winter. The flowers are white, turning to yellow, very fragrant. 25c each; 5 for \$1.00; prepaid.

Wistaria

CHINESE WISTARIA (Chinensis)—Will bloom the first year. Has pale green leaves and bears profusely dense, drooping clusters, purplish, pea-shaped flowers. Blooms in May. 2-year, 50c each; 2 for 90c; prepaid.

ALTHEA (Rose of Sharon)—They can be kept trimmed quite low, or can be allowed to grow tall as a screen. A hedge of them in bloom, with all colors of flowers is a wonderful sight. 12-18 in., 25 for \$1.00; 50 for \$1.50; 100 for \$2.50; prepaid.

AMOR RIVER PRIVET—Hardest of all hedge plants. Beautiful upright growth, very compact. Holds its foliage till middle of October or later. 12-18 in., 25 for \$1.40; 50 for \$2.65; prepaid. 18-24 in., 25 for \$1.75; 100 for \$3.45; prepaid.

CALIFORNIA PRIVET—Free growth and succeeds under the adverse conditions; good in south. Foliage is nearly evergreen, remaining on the plant until mid-winter. Nice plants, 12-18 in., 25 for \$1.25; 50 for \$2.00. 18-24 in., 25 for \$1.50; 50 for \$2.60; prepaid.

JAPANESE BARBERRY (Berberis Thunbergii)—One of the best hedge plants in existence. Beautiful throughout the year; abundant crop of bright red berries in winter. Compact growth and thorny branches make a defense hedge that will turn cattle after five years growth. Poor soil is no barrier. 10-15 in. plants, 25 for \$2.00; 50 for \$3.50; 100 for \$6.50; prepaid.

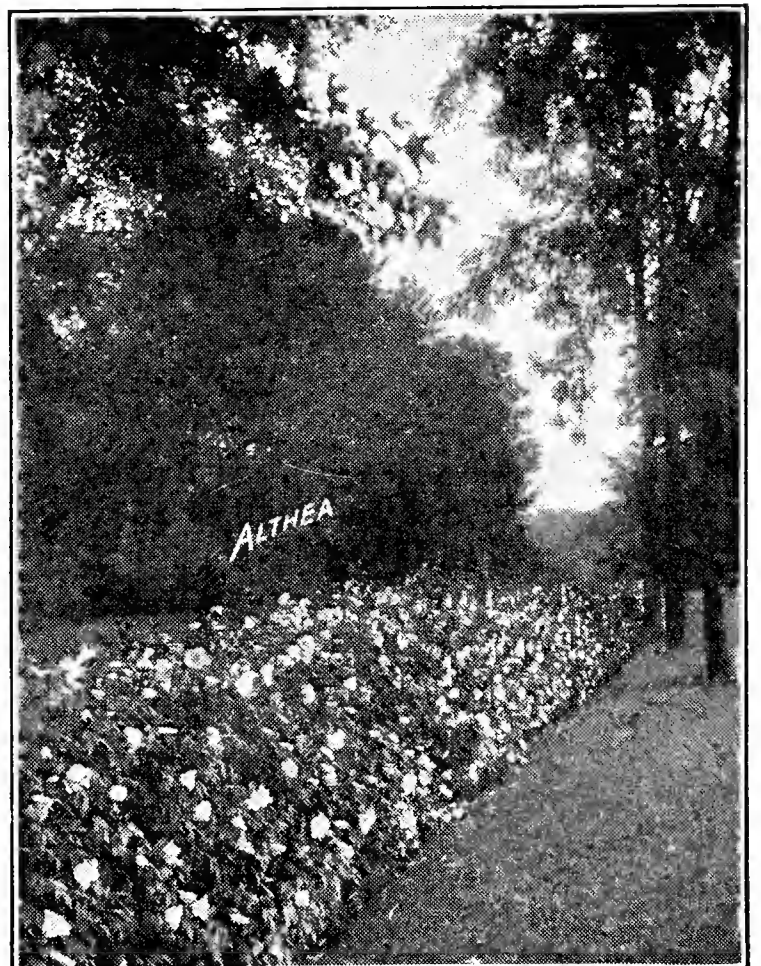
SPIREA VAN HOUTTEII—With its charming and delicate foliage is one of the finest of shrubs for hedges. It never fails to attract with its perfect mass of pure white flowers or pendulous branches often drooping to the ground. Foliage is attractive late in fall. 18-24 in., 12 for 65c; 25 for \$1.25; 50 for \$2.40; prepaid.

Hardy Ferns

The most beautiful and natural effects can be produced by planting hardy ferns. They are perfectly hardy and can stand planting either in shady or sunny positions. The Hardy Ferns are most satisfactory for planting on shady banks and around porches where the sun does not reach. Do well in any good well drained soil and require practically no care. No home should be without them. We can furnish either of the following varieties. 20c each; 6 for \$1.00; prepaid.

OSTRICH FERN—The large leaf, tall growing variety.

ROYAL FERN—One of the large growing varieties.



Page of BARGAINS for EVERY HOME

PREPAID

FRENCH LILAC SEEDLINGS

This stock was carefully selected from only the best varieties of French lilac. Plant them in a row now and watch them develop into a beautiful hedge of bloom. 8 to 12 inches.

5 POSTPAID FOR 50c

SPIREA VAN HOUTTEII

Good 2 Year Old

This get-acquainted offer of strong plants is an exceptionally good value. These will bloom the first year after planting. They should be around every home for a quick, lasting effect.

5 POSTPAID FOR 50c

CHERRY TREES

The Two Best Varieties

Cherry Trees are the most satisfactory fruit trees to plant. They require no spraying or pruning, bear young and the fruit is delicious. We are offering in 3 ft. size—2 Montmorency and 2 Early Richmond.

4 POSTPAID FOR \$1

DWARF PUMILA IRIS

This Iris blooms and looks just like the other Iris except that it is dwarf. These plants are excellent to use for a low border or rock gardens. Blooms earlier than the other Iris.

4 POSTPAID FOR 25c

ROSE OF SHARON

Good 12 to 15 inch Plants

An extra good shrub and one of the best fall blooming plants grown. It can be grown as a small tree or trimmed as a shrub. Assorted colors. Plant one foot apart for hedge.

6 POSTPAID FOR 25c

ALL FOR 50c PREPAID

1 Red Japan Barberry.....8-12 in.
1 Red Dwarf Spirea.....8-12 in.
3 Hardy Sweet Peas.....2 yr. No. 1

All POSTPAID FOR 50c

HYDRANGEA

Hills of Snow

These strong plants will give you flowers the first year. They will do well in the shade or sun, and bloom from July until frost.

3 POSTPAID FOR 50c

FIVE ROCK GARDEN EVERGREENS

One each of golden, blue, silver, and green color. Select stocky plants; three and four years old. Can be used in rock gardens or any other place.

All POSTPAID FOR \$1

DWARF RED SPIREA

10 to 12 inch, 2 years old

A low-growing shrub. Beautiful delicate pink flowers. Blooms throughout the entire growing season. This is the lowest price we have ever known them to be offered.

2 POSTPAID FOR 25c

PERENNIALS

Old-Fashioned Flowers

Our Selection

All good varieties, transplanted field grown plants that will bloom for you next year. Very popular. Our stock includes the best varieties.

10 POSTPAID FOR \$1

3 PEONIES 50c

1 White First Prize

1 Red First Prize 1 Pink First Prize

EUONYMUS COLORATA

Hardy Evergreen Vine

Two-year-old plants, fine for covering walls or unsightly places. Beautiful in both summer and winter. Will cling to walls.

3 POSTPAID FOR 25c